

Input data

System of measurement		Metric
Input type		Coupling for electric motor
Input speed	[rpm]	1400
Output speed	[rpm]	93.33
Ratio (i=)		15
Frequency	[Hz]	50
Input options		IEC
Requested input power	[kW]	4
Service factor		1.2

Output data

Gear unit	CM 090 U 15 112B5 M1	
------------------	-----------------------------	--

Type		CM - Wormgearboxes
Size		090
Ratio (i=)		15
Input flange		B5
Mounting position		M1
Input speed	[rpm]	1400
Output speed	[rpm]	93.33
Rated output torque	[Nm]	351.99
Service Factor		1.2
Efficiency		0.86

Gear unit configuration

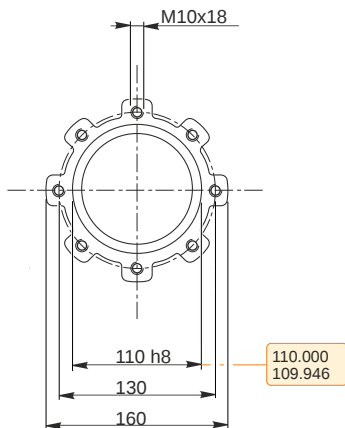
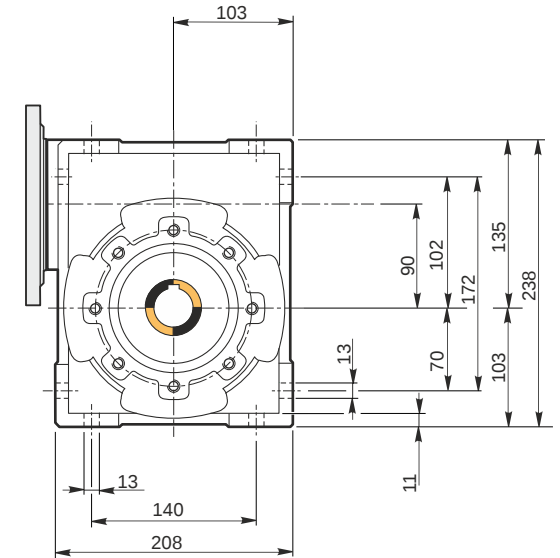
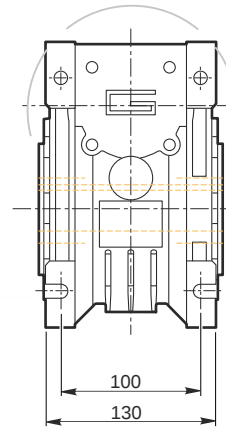
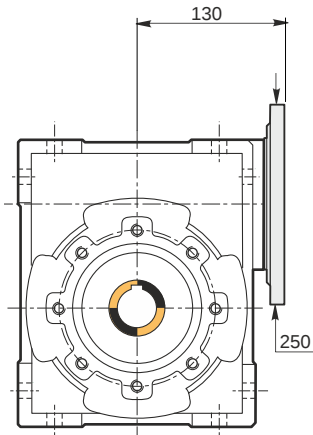
Frame dimensions		METRIC
Output shaft		Hollow output shaft
Fixing		Universal
Mounting position		M1

Output radial and axial loads

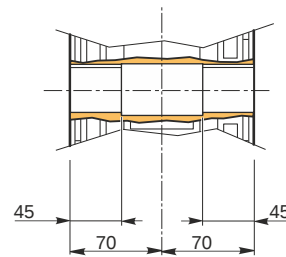
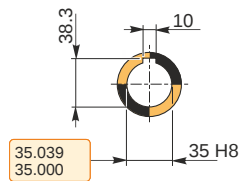
Output radial load	[N]	3990
--------------------	-----	------

Electric motor coupling

Size		112M-4
Poles n.		4
Power	[kW]	4

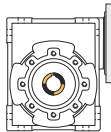


Hollow output shaft

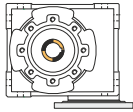


Mounting positions

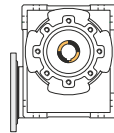
M1(B3)



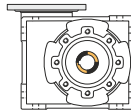
M2(V6)



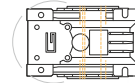
M3(B8)



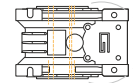
M4(V5)



M5(B7)



M6(B6)

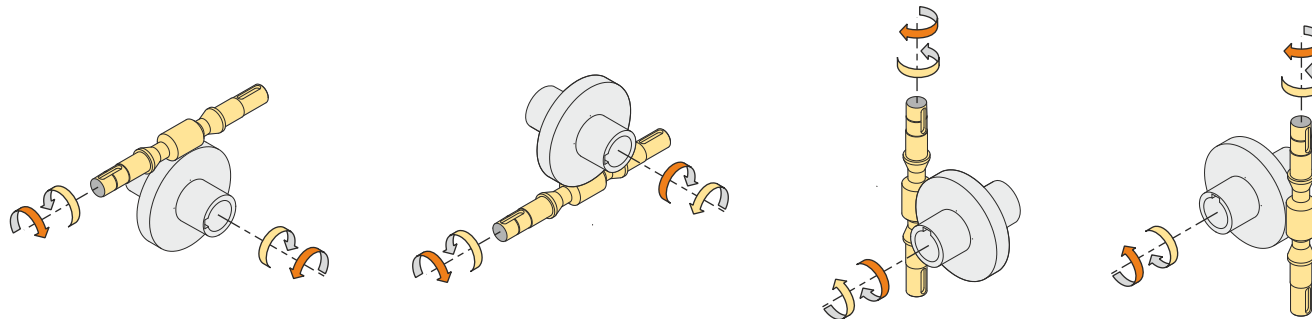


Lubricant type: this gear unit is delivered life lubricated



Oil quantity [litres]

Direction of rotation



Weight

Gear unit [kg] 13

Gearing data

Number of starts 2
Lead angle 15° 36'
Pressure angle 20°

Backdriving

Static back-driving
Quick back-driving
Dynamic back-driving